



Electrolux
PROFESSIONAL

Modular Cooking Range Line 700XP 4-Hot Square Plates Electric Boiling Top Range

ITEM # _____

MODEL # _____

NAME # _____

SIS # _____

AIA # _____



371017 (E7ECEH4Q00)

4-Hot Square Plate (2,6 kW each) electric Boiling Top

371130 (E7ECEH4Q0N)

4-Hot Square Plate (2,6 kW each) electric Boiling Top

Short Form Specification

Item No. _____

To be installed on open base installations, bridging supports or cantilever systems. Four 2.6 kW square cast-iron hot plates hermetically sealed to the one-piece top. Exterior panels in stainless steel with Scotch Brite finish. One piece pressed work top in 1.5 mm thick stainless steel. Right-angled side edges to allow flush-fitting junction between units.

Main Features

- Unit to be mounted on open base cupboards, bridging supports or cantilever systems.
- The four 2.6kW cast-iron square plates are hermetically sealed to the one-piece top.
- The special design of the control knob system guarantees against water infiltration.
- IPx4 water protection.
- Suitable for countertop installation.

Construction

- All exterior panels in Stainless Steel with Scotch Brite finishing.
- One piece pressed 1.5 mm work top in Stainless steel.
- Model has right-angled side edges to allow flush fitting joints between units, eliminating gaps and possible dirt traps.

Optional Accessories

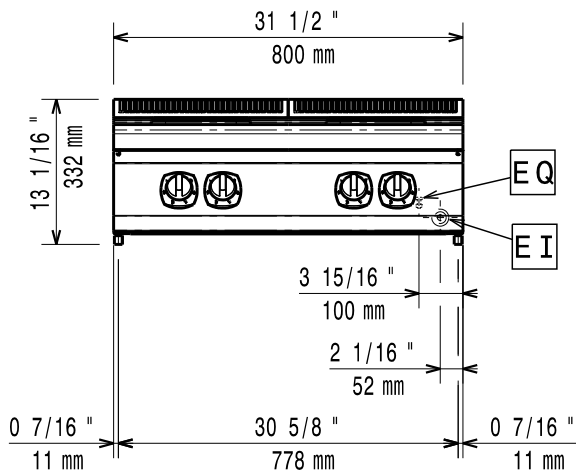
- Junction sealing kit PNC 206086 ☐
- Support for bridge type installation, 800mm PNC 206137 ☐
- Support for bridge type installation, 1000mm PNC 206138 ☐
- Support for bridge type installation, 1200mm PNC 206139 ☐
- Support for bridge type installation, 1400mm PNC 206140 ☐
- Support for bridge type installation, 1600mm PNC 206141 ☐
- 2 cast iron plate bars for electric cooking top PNC 206168 ☐
- Full size basket with holder for 15lt programmable fryer 700 line (only for 371130) PNC 206196 ☐
- Water column with swivel arm (water column extension not included) PNC 206289 ☐
- Water column extension for 700 line PNC 206291 ☐
- Chimney upstand, 800mm PNC 206304 ☐
- Right and left side handrails PNC 206307 ☐
- Back handrail 800 mm PNC 206308 ☐
- Chimney grid net, 400mm (700XP/900) PNC 206400 ☐
- Frontal handrail, 800mm PNC 216047 ☐
- Frontal handrail, 1200mm PNC 216049 ☐
- Frontal handrail, 1600mm PNC 216050 ☐
- Large handrail - portioning shelf, 800mm PNC 216186 ☐
- 2 side covering panels for top appliances PNC 216277 ☐

APPROVAL: _____

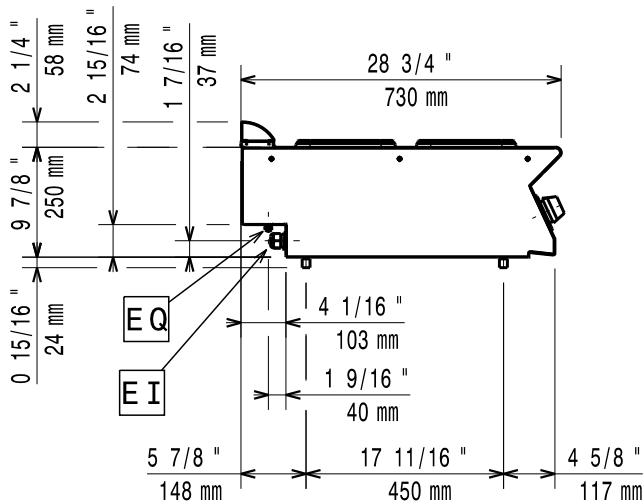


Experience the Excellence
www.electroluxprofessional.com

Front

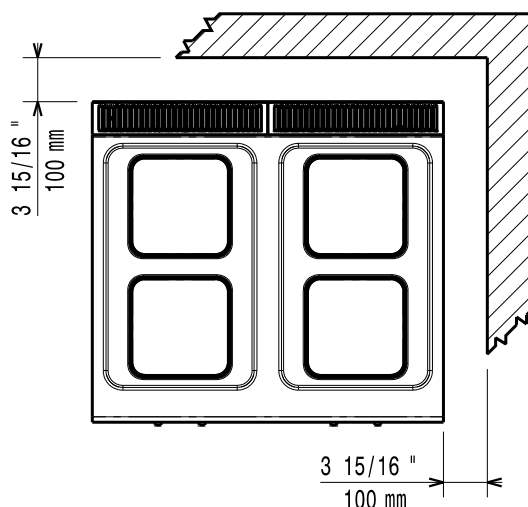


Side



EI = Electrical inlet (power)
 EQ = Equipotential screw

Top



Electric

Supply voltage:

371017 (E7ECEH4Q00)

380-400 V/3 ph/50-60 Hz

371130 (E7ECEH4Q0N)

230 V/3 ph/50/60 Hz

Predisposed for:

Total Watts:

10.4 kW

Key Information:

If appliance is set up or next to or against temperature sensitive furniture or similar, a safety gap of approximately 150 mm should be maintained or some form of heat insulation fitted.

External dimensions, Width: 800 mm

External dimensions, Depth: 730 mm

External dimensions, Height: 250 mm

Net weight: 40 kg

Shipping weight:

371017 (E7ECEH4Q00)

48 kg

371130 (E7ECEH4Q0N)

47 kg

Shipping height:

371017 (E7ECEH4Q00)

520 mm

371130 (E7ECEH4Q0N)

540 mm

Shipping width:

820 mm

Shipping depth:

860 mm

Shipping volume:

371017 (E7ECEH4Q00)

0.37 m³

371130 (E7ECEH4Q0N)

0.38 m³

Certification group:

371017 (E7ECEH4Q00)

EH74T

371130 (E7ECEH4Q0N)

N7CEI

Front Plates Power:

2.6 - 2.6 kW

Back Plates Power:

2.6 - 2.6 kW

Front Plates dimensions:

230x230 230x230

Back Plates dimensions:

230x230 230x230